


Revision B:

• MUZ-FD50VA-  has been added.

Please void OBB489 REVISED EDITION-A.

OUTDOOR UNIT

PARTS CATALOG

No. OBB489
REVISED EDITION-B

Models

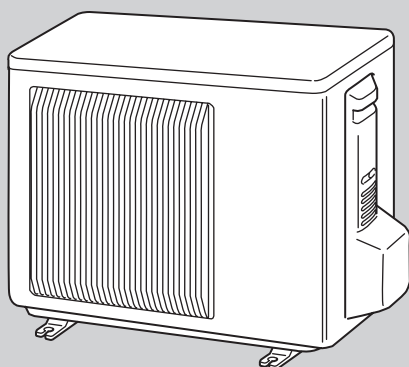
MUZ-FD25VA - 

MUZ-FD25VAH - , 

MUZ-FD35VA - 

MUZ-FD35VAH - 

MUZ-FD50VA - 



MUZ-FD25/35

CONTENTS

1. RoHS PARTS LIST..... 2

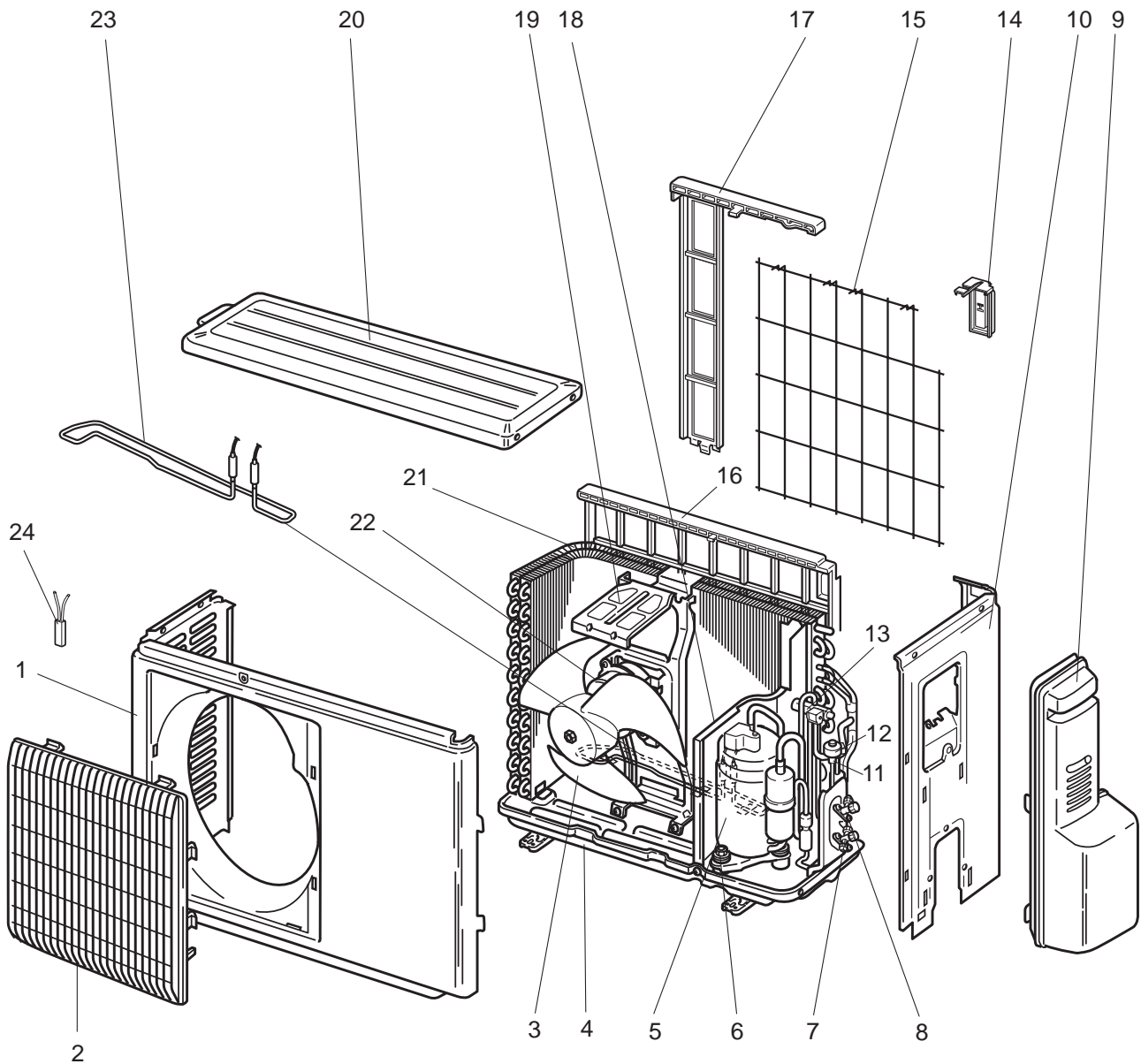
SERVICE MANUAL (OBH489)

NOTE:
RoHS compliant products have <G> mark on the spec name plate.



MUZ-FD25VA MUZ-FD25VAH MUZ-FD35VA MUZ-FD35VAH

1-1. OUTDOOR UNIT STRUCTURAL PARTS AND FUNCTIONAL PARTS



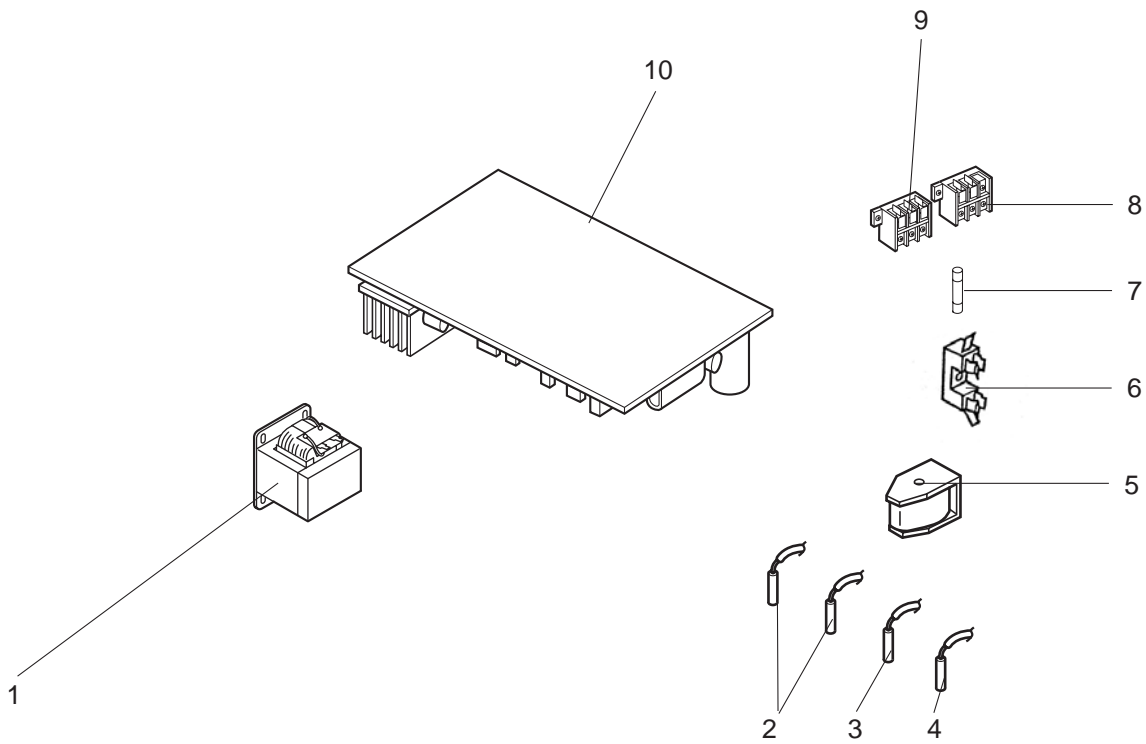
1-1. OUTDOOR UNIT STRUCTURAL PARTS AND FUNCTIONAL PARTS

Part number that is circled is not shown in the illustration.

No.	RoHS	Part No.	Part Name	Symbol in Wiring Diagram	Q'ty/unit					Remarks
					MUZ-FD25			MUZ-FD35		
					VA- <small>[E1]</small>	VAH- <small>[E1] [E2]</small>		VA- <small>[E1]</small>	VAH- <small>[E1]</small>	
1	G	E12 927 232	CABINET		1	1	1	1	1	
2	G	E12 927 521	GRILLE		1	1	1	1	1	
3	G	E12 927 501	PROPELLER		1	1	1	1	1	
4	G	E12 927 290	BASE		1			1		
	G	E12 928 290				1	1		1	
5	G	E12 C37 900	COMPRESSOR	MC	1	1	1	1	1	SNB130FGBH
6	G	E12 C34 506	COMPRESSOR RUBBER SET		3	3	3	3	3	3 RUBBERS/ SET
7	G	E12 927 661	STOP VALVE (GAS)		1	1	1	1	1	ø9.52
8	G	E12 927 662	STOP VALVE (LIQUID)		1	1	1	1	1	ø6.35
9	G	E12 927 245	SERVICE PANEL		1	1	1	1	1	
10	G	E12 C37 233	BACK PANEL		1	1	1	1	1	
11	G	E12 838 640	EXPANSION VALVE		1	1	1	1	1	
12	G	E12 927 493	EXPANSION VALVE COIL	LEV	1	1	1	1	1	
13	G	E12 931 961	4-WAY VALVE		1	1	1	1	1	
14	G	E12 930 079	THERMO HOLDER			1	1		1	
15	G	E12 930 525	CONDENSER WIRE NET			1	1		1	
16	G	E12 929 523	CONDENSER NET		1			1		
17	G	E12 930 523	CONDENSER NET			1	1		1	
18	G	E12 C34 293	SEPARATOR		1			1		
	G	E12 C36 293				1	1		1	
19	G	E12 929 515	MOTOR SUPPORT		1	1	1	1	1	
20	G	E12 927 297	TOP PANEL		1	1	1	1	1	
21	G	E12 C34 630	OUTDOOR HEAT EXCHANGER		1	1	1	1	1	
22	G	E12 C34 301	OUTDOOR FAN MOTOR	MF	1	1	1	1	1	RC0J50-□□
23	G	E12 C36 526	DEFROST HEATER	H		1	1		1	
24	G	E12 C36 381	HEATER PROTECTOR	26H		1	1		1	
25	G	E12 927 937	CAPILLARY TUBE		1	1	1	1	1	ø3.0×ø2.0×240
26	G	E12 735 936	CAPILLARY TUBE		2	2	2	2	2	ø3.0×ø1.8×600
27	G	E12 838 704	DRAIN SOCKET		1			1		

MUZ-FD25VA MUZ-FD25VAH MUZ-FD35VA MUZ-FD35VAH

1-2. OUTDOOR UNIT ELECTRICAL PARTS



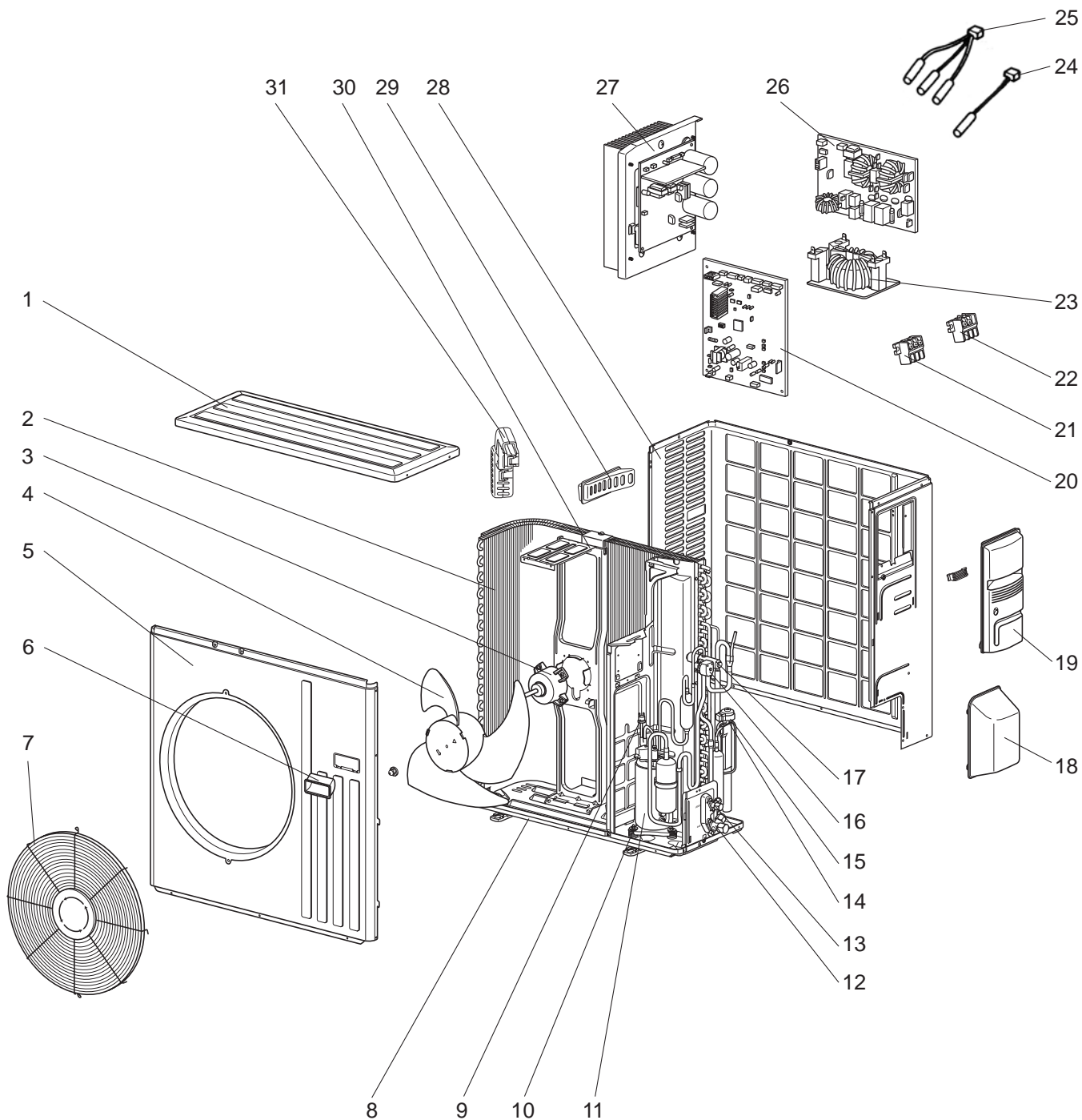
1-2. OUTDOOR UNIT ELECTRICAL PARTS

Part number that is circled is not shown in the illustration.

No.	RoHS	Part No.	Part Name	Symbol in Wiring Diagram	Q'ty/unit					Remarks
					MUZ-FD25			MUZ-FD35		
					VA- <small>[E1]</small>	VAH- <small>[E1]</small> <small>[E2]</small>		VA- <small>[E1]</small>	VAH- <small>[E1]</small>	
1	G	E12 838 337	REACTOR	L61	1	1	1	1	1	
2	G	E12 C34 306	THERMISTOR SET	RT61, RT62	1	1	1	1	1	DEFROST, DISCHARGE
3	G	E12 927 308	AMBIENT TEMPERATURE THERMISTOR	RT65	1	1	1	1	1	
4	G	E12 C34 307	OUTDOOR HEAT EXCHANGER TEMPERATURE THERMISTOR	RT68	1	1	1	1	1	
5	G	E12 C34 490	R.V. COIL	21S4	1	1	1	1	1	
6	G	E12 735 241	FUSE HOLDER		1	1	1	1	1	
7	G	E12 735 382	FUSE	F61	1	1	1	1	1	T20AL250V
8	G	E12 573 375	TERMINAL BLOCK	TB1	1	1	1	1	1	3 P
9	G	E12 927 374	TERMINAL BLOCK	TB2	1	1	1	1	1	3 P
10	G	E12 C34 451	INVERTER P.C. BOARD		1					Including heat sink and RT64
	G	E12 C35 451					1			
	G	E12 C36 451				1	1			
	G	E12 C37 451						1		
⑪	G	E12 127 382	FUSE	F701, F801, F901	1	1	1	1	1	T3.15AL250V
⑫	G	E12 661 385	VARISTOR	NR61~NR64	1	1	1	1	1	

MUZ-FB50VA

1-3. OUTDOOR UNIT STRUCTURAL PARTS, ELECTRICAL PARTS AND FUNCTIONAL PARTS



1-3. OUTDOOR UNIT STRUCTURAL PARTS, ELECTRICAL PARTS AND FUNCTIONAL PARTS

Part number that is circled is not shown in the illustration.

No.	R/S	Part No.	Part Name	Symbol in Wiring Diagram	Q'ty/unit	Remarks
					MUZ-FD50VA-[E1]	
1	G	E12 819 297	TOP PANEL		1	
2	G	E12 D84 630	OUTDOOR HEAT EXCHANGER		1	
3	G	E12 938 301	OUTDOOR FAN MOTOR	MF	1	RC0J60-□□
4	G	E12 851 501	PROPELLER		1	
5	G	E12 819 232	CABINET		1	
6	G	E12 819 009	HANDLE		1	
7	G	E12 819 521	FAN GUARD		1	
8	G	E12 D86 290	BASE		1	
9	G	E12 853 646	HIGH PRESSURE SWITCH	HPS	1	
10	G	E12 C34 506	COMPRESSOR RUBBER SET		3	3 RUBBERS/SET
11	G	E12 D84 900	COMPRESSOR	MC	1	SNB172FDGH
12	G	E12 851 661	STOP VALVE (GAS)		1	ø12.7
13	G	E12 B36 662	STOP VALVE (LIQUID)		1	ø6.35
14	G	E12 851 640	EXPANSION VALVE		1	
15	G	E12 851 493	EXPANSION VALVE COIL	LEV	1	
16	G	E12 935 490	R.V. COIL	21S4	1	
17	G	E12 891 961	4-WAY VALVE		1	
18	G	E12 819 650	VALVE COVER		1	
19	G	E12 819 245	SERVICE PANEL		1	
20	G	E12 E23 450	OUTDOOR ELECTRONIC CONTROL P.C. BOARD		1	
21	G	E12 935 374	TERMINAL BLOCK	TB1	1	3 P
22	G	E12 573 375	TERMINAL BLOCK	TB2	1	3 P
23	G	E12 851 337	REACTOR	L	1	
24	G	E12 D84 309	AMBIENT TEMPERATURE THERMISTOR	RT65	1	
25	G	E12 D84 308	THERMISTOR SET	RT61, RT62, RT68	1	DEFROST, DISCHARGE, OUTDOOR HEAT EXCHANGER
26	G	E12 D86 444	NOISE FILTER P.C. BOARD		1	
27	G	E12 D84 440	POWER BOARD		1	Including heat sink and RT64
28	G	E12 D86 233	BACK PANEL (OUT)		1	
29	G	E12 817 009	HANDLE		1	
30	G	E12 D84 515	MOTOR SUPPORT		1	
31	G	E12 D84 079	THERMO HOLDER		1	
32	G	E12 784 382	FUSE	F71, F801	1	T3.15AL250V
33	G	E12 977 385	FUSE & VARISTOR SET	F64, NR64	1	T2AL250V
34	G	E12 853 936	CAPILLARY TUBE (TAPER PIPE)		1	ø3.6 × ø2.4 × 50
35	G	E12 817 704	DRAIN SOCKET		1	
36	G	E12 444 705	DRAIN CAP		2	2 PC/SET

※ Please confirm the serial number when exchanging parts.



HEAD OFFICE: TOKYO BLDG., 2-7-3, MARUNOUCHI, CHIYODA-KU, TOKYO 100-8310, JAPAN

© Copyright 2007 MITSUBISHI ELECTRIC CO.,LTD
Distributed in Nov. 2008. No. OBB489 REVISED EDITION-B 5
Distributed in Nov. 2007. No. OBB489 REVISED EDITION-A 6
Distributed in Aug. 2007. No. OBB489 6
Made in Japan

New publication, effective Nov. 2008
Specifications subject to change without notice.